

A8509 SB+I

Upper: Scrub Microfiber Leather

Lining: BK Mesh

Insole: Anti-Bacterial、Anti-Fatigue PU

Outsole: EVA/Rubber

Toecap: Composit Toecap

Midsole: /

Size: 35-47

EN ISO 20345:2022 | GB 21148-2020



Anti-Smash



Anti-Slip



Shock
Absorption



Electric
Insulation

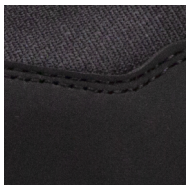


Features



Composit Toecap · EN 12568

Toe protection against injuries from falling objects, Offers resistance to 200-joule impact and 15-kilonewton static load.



Scrub Microfiber Leather

The material is lightweight, soft and comfortable when worn, and not easy to harden or harden; Good breathability, not easily stuffy feet when worn for a long time. Has good wear resistance and long service life.



EVA/Rubber Composite Outsole

Composite outsole technology, high elasticity cushioning, anti slip and wear-resistant, soft and comfortable heel, high elasticity and not easy to fatigue. Anti slip and wear-resistant three-dimensional texture, SRC grade anti slip outsole, strong grip to cope with different environments.

Industries

Industries such as logistics transportation, machinery manufacturing, electricity, automobile manufacturing, transportation, gas stations, food processing, plastic product processing, etc.

ANTENG Standard Package Instruction (Average US 9# for Reference)

Shoe weight: 1.0-1.5 KGS/Pair	Carton Weight: 10-15 KGS/Carton
1Pair/Color Box, Size: 33 × 22 × 12.5CM	10Pair/Carton, Size: 64 × 45 × 34.5CM



1Pair/Color Box



10Pair/Carton

User Description

1. Recommended for use in industries such as electricity, automobile manufacturing, transportation, gas stations, and food processing.
- 2.Usage restrictions: The selected shoes must be suitable for the correct workplace. For risks or dangers not mentioned in this document, please avoid them. Free to use, we cannot guarantee to provide the necessary protection.
- 3.Size Usage: All shoe tongue labels are labeled with standard sizes and also include comparison references between different size standards. For example, Chinese sizes, British sizes, American sizes, etc. Please choose shoes that are the right size, shoes that are too loose or too tight may not be suitable. The law provides effective comfort and protection levels.
- 4.Storage method: It is recommended to place the shoes in their original packaging box and store them in a clean, dust-proof, and well ventilated environment at room temperature and dry conditions. The location can effectively extend the lifespan of shoes.
- 5.Cleaning method: Please use a dry cloth or other suitable cleaning products regularly to clean the shoes. Do not use corrosive cleaning agents, etc.