

A9611 S1P ESD/S1/O1

Upper: Microfiber Leather+Mesh

Lining: Sandwich Mesh

Insole: HI-POLY

Outsole: EVA/Rubber

Toecap: Composit Toecap/Steel Toecap

Midsole: Kevlar

Size: 34-47

EN ISO 20345:2022 | GB 21148-2020



Anti-Smash



Anti-Puncture



Anti-Slip



Shock Absorption



Anti-Static



Features



Composit Toecap • EN 12568

Toe protection against injuries from falling objects, Offers resistance to 200-joule impact and 15-kilonewton static load.



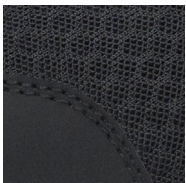
Steel Toecap • EN 12568

Toe protection against injuries from falling objects, Offers resistance to 200-joule impact and 15-kilonewton static load.



Kevlar Anti-Puncture Midsole • EN 12568

Full-foot protection with 1100N puncture resistance. Lighter and more comfortable than steel plates, featuring heat resistance and corrosion resistance with triple the toughness of steel.



Microfiber Leather+Mesh

Microfiber leather has excellent wear resistance, is not easily worn or torn, and has a long service life, More environmentally friendly. The mesh upper has good breathability, which can effectively drain sweat and keep the feet dry.



EVA/Rubber Composite Outsole

Composite outsole technology, high elasticity cushioning, anti slip and wear-resistant, soft and comfortable heel, high elasticity and not easy to fatigue. Anti slip and wear-resistant three-dimensional texture, SRC grade anti slip outsole, strong grip to cope with different environments.

ANTENG Standard Package Instruction (Average US 9# for Reference)

Shoe weight : 0.8-1.5 KGS/Pair	Carton Weight : 8-15 KGS/Carton
1Pair/Color Box, Size : 33 × 22 × 12.5CM	10Pair/Carton, Size : 64 × 45 × 34.5CM



1Pair/Color Box



10Pair/Carton

User Description

1. Recommended for use in industries such as electricity, automobile manufacturing, transportation, gas stations, and food processing.

2.Usage restrictions: The selected shoes must be suitable for the correct workplace. For risks or dangers not mentioned in this document, please avoid them. Free to use, we cannot guarantee to provide the necessary protection.

3.Size Usage: All shoe tongue labels are labeled with standard sizes and also include comparison references between different size standards. For example, Chinese sizes, British sizes, American sizes, etc. Please choose shoes that are the right size, shoes that are too loose or too tight may not be suitable. The law provides effective comfort and protection levels.

4.Storage method: It is recommended to place the shoes in their original packaging box and store them in a clean, dust-proof, and well ventilated environment at room temperature and dry conditions. The location can effectively extend the lifespan of shoes.

5.Cleaning method: Please use a dry cloth or other suitable cleaning products regularly to clean the shoes. Do not use corrosive cleaning agents, etc.