

AT802 S1P/SBP+I

Upper: Corrccted Cow Leather

Lining: Sandwich Mesh

Insole: PU Cotton

Outsole: EVA/Rubber

Toecap: Composit Toecap

Midsole: Kevlar

Size: 34-47

EN ISO 20345:2022 | GB 21148-2020



Features



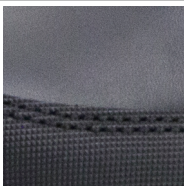
Composit Toecap • EN 12568

Toe protection against injuries from falling objects, Offers resistance to 200-joule impact and 15-kilonewton static load.



Kevlar Anti-Puncture Midsole • EN 12568

Full-foot protection with 1100N puncture resistance. Lighter and more comfortable than steel plates, featuring heat resistance and corrosion resistance with triple the toughness of steel.



Corrccted Cow Leather

Durable and wear-resistant, with excellent tear resistance, it can effectively cope with complex working environments. The surface texture is delicate and uniform, easy to clean and maintain, with good breathability, balancing safety protection and comfortable wearing.



EVA/Rubber Composite Outsole

Composite outsole technology, high elasticity cushioning, anti slip and wear-resistant, soft and comfortable heel, high elasticity and not easy to fatigue. Anti slip and wear-resistant three-dimensional texture, SRC grade anti slip outsole, strong grip to cope with different environments.

Industries

Industries such as aviation ground handling, engineering construction, electronic assembly, automobile manufacturing, metal processing, power grid, chemical engineering, mechanical operation, etc.

ANTENG Standard Package Instruction (Average US 9# for Reference)

| | |
|---|---------------------------------------|
| Shoe weight: 1.0-1.3 KGS/Pair | Carton Weight: 10-13 KGS/Carton |
| 1Pair/Color Box, Size: 33 × 22 × 12.5CM | 10Pair/Carton, Size: 64 × 45 × 34.5CM |



1Pair/Color Box



10Pair/Carton

User Description

1. Recommended for use in industries such as electronic assembly, automotive manufacturing, power grid, chemical engineering, mechanical operation, etc.

2.Usage restrictions: The selected shoes must be suitable for the correct workplace. For risks or dangers not mentioned in this document, please avoid them. Free to use, we cannot guarantee to provide the necessary protection.

3.Size Usage: All shoe tongue labels are labeled with standard sizes and also include comparison references between different size standards. For example, Chinese sizes, British sizes, American sizes, etc. Please choose shoes that are the right size, shoes that are too loose or too tight may not be suitable. The law provides effective comfort and protection levels.

4.Storage method: It is recommended to place the shoes in their original packaging box and store them in a clean, dust-proof, and well ventilated environment at room temperature and dry conditions. The location can effectively extend the lifespan of shoes.

5.Cleaning method: Please use a dry cloth or other suitable cleaning products regularly to clean the shoes. Do not use corrosive cleaning agents, etc.